



Endacott Society

Retired Faculty and Staff endacottsociety.org

May 2022



TRANSITIONS ahead

Wednesday coffee hour, Armchair Travel, Garden Seminar now hybrid; Cinema Studies in-person only

Activities for May include new chairs and times; a few sessions are hybrid, and some remain Zoom only. Members should read the scheduled activities on pages 3-5 carefully.

The changes begin with the Wednesday 10 O’Clock Scholars coffee hours becoming a combination of in-person and Zoom.

During April, Dave Mannering and Paul Lim worked to enable the Endacott Society to make the Wednesday 10 O’Clock Scholars Coffee Hour a hybrid event: Members may attend in person (in the Malott Room at the Kansas Memorial Union) or on Zoom.

Armchair Travel and Garden Seminar sessions also will be hybrid meetings. In addition, the Garden Seminar will now meet at 9 a.m., 30 minutes later than it has convened for past two years, when sessions were limited to Zoom.

Cinema Studies will offer Domestic and Foreign Film screenings in person in the Union’s Pine Room on the Level 6. J. Tom Adams and Nora Clark are debuting as chairs for this activity.

Games Theory, which has featured the online drawing game Scribbler, will discontinue in June. Dave Mannering has coordinated this for two years. The search continues for a new chair for the activity, which has included board and card games. Most of the games have been stored, waiting for the Alumni Center to reopen once the renovation work is completed.

Ron Schorr is attempting to schedule more Lunch Bunch sessions at noon on Thursdays outdoors at the Rotary Arboretum. For May, Ron is working with three options: In good weather,

meeting at the arboretum; if the weather forecast is wet or windy, meeting indoors at a local cafe (to be announced by email); and — should Covid cases surge — returning to Zoom if necessary.

All other scheduled activities for May will be on Zoom, with the exception of Tai Chi, which meets in South Park when weather allows.

Donations welcome

Endacott Society continues to collect donations through June 2022 toward the joint KU Alumni projects to build the Welcome Center and renovate the alumni building. Donations are tax deductible. Please make checks payable to KU Endowment and send them to our treasurer, Pam Houston, 1807 N. 1150 Road, Lawrence KS 66046.

Postcards from Nigeria #1



Photo submitted by Omofolabo Ajayi-Soyinka

Our president sends greetings from Nigeria, where she is visiting family. Above: entry walk to a sibling’s home. More photos on pages 6 and 8.

School of Engineering honors Paul Willhite with distinguished service award

The School of Engineering is honoring **G. Paul Willhite** with a Distinguished Engineering Service Award. He and two engineering alumni — Angela Chammas, a retired Sprint executive, and Paul Neidlein, regional president for JE Dunn Construction in Kansas City, Mo. — will receive the award at an invitational ceremony May 5. The award recognizes those who have maintained close association with the school and have made outstanding contributions to the engineering profession and to society.

With more than a half-century of contributions and dedication to KU and the engineering industry, Paul is recognized as a remarkable educator and researcher who has served the academic community, university, state, nation, and international societies with the utmost distinction. He is a member of the prestigious National Academy of Engineering and helped launch a key initiative to develop a range of improved oil recovery applications that were affordable for



Paul Willhite

independent operators in Kansas and the region. Textbooks he has written remain the foundational work in petroleum engineering education.

He earned a bachelor's degree in chemical engineering from Iowa State in 1959 and a doctorate from

Northwestern in 1962. In 1969, Willhite joined KU's engineering faculty, retiring in 2019 as Distinguished Professor of Chemical and Petroleum Engineering.

In 1974, Willhite founded and co-directed the Tertiary Oil Recovery Project (TORP) with **Don Green**, professor emeritus. The program was designed to acquaint Kansas producers with the technical and economic potential of enhanced recovery methods for oil and gas fields that were affordable for independent operators in Kansas and the region.

Willhite and his wife, Jewell, have five children, 13 grandchildren and five great-grandchildren.

Three ways to contribute to Cookie Jar Fund

During a weekly coffee hour last month, members agreed to create a Cookie Jar Fund to purchase baked treats from the Kansas Memorial Union catering services. The Union's catering policies require those renting rooms for their events to use the catering services for beverages and food items.

Any donation is appreciated. The Endacott Society will cover the first week each month from its account. The Cookie Jar Fund will be used for the remainder of each month.

Pam Houston, Endacott treasurer, has listed three ways to contribute to the Endacott Society Cookie Jar Fund:

1. Drop contribution in the collection container by the coffee urn at each Wednesday morning meeting.

2. Mail a check to Cindi Long, KUAA Accountant, 1266 Oread Avenue, Lawrence, KS 66045-3100. Note that the donation is for Endacott. You may also put a check in the

collection bowl on Wednesday morning, and Pam will mail it to Cindi.

3. Contribute online with a credit card:

- Go to KUalumni.org
- At top of screen, right side, click on \$ GIVE header; click on the GIVE NOW button and fill out the form. On your phone, you may need to click on the three lines in order to see the \$ GIVE header.
- In the **Special Instructions** box, indicate that the donation is for the Endacott Society.

For those interested in giving a ballpark amount to fund a week's worth of cookies, Union cookies are \$1 each, sold by the dozen. The Union catering services need 12 days advance notice for orders. More details are online <https://dining.ku.edu/catering-events-page>

Coffee hour guests May 18 and 25

Two guest speakers will visit the coffee hours in May. On May 18, Heath Peterson, KU Alumni Association president, will update us on the renovation work at the Alumni Center. On May 25, Peggy Johnson, United Way of Lawrence director, will speak to us.

MAY ACTIVITIES

NOTE: To receive **Zoom links and passwords**, email Omofolabo Ajayi-Soyinka omofola@ku.edu;

For in-person meetings, in consideration of everyone, participants are expected to be fully vaccinated and using masks if recommended.

No programs are scheduled this month for Arts & Sciences, Music Appreciation, or Opera Study.

10 O'CLOCK SCHOLARS (Hybrid)

(Wednesday Coffee Hour))

Omofolabo Ajayi-Soyinka omofola@ku.edu

Kansas Memorial Union, Malott Room, Level 6

Wednesday, **May 4**, 10 a.m.

Wednesday, **May 11**, 10 a.m.

Wednesday, **May 18**, 10 a.m., with Heath Peterson, Alumni director

Wednesday, **May 25**, 10 a.m., with Peggy Johnson, United Way director

ARMCHAIR TRAVEL (Hybrid)

Ron Schorr rwwschorr@gmail.com

Thursday, **May 26**, 1:30 p.m.

Kansas Memorial Union, Malott Room, Level 6

A Circuminsular Visit to Ireland: Farmstead B&Bs and Natural History

Cal Cink will give a Powerpoint talk about a 2003 visit to Ireland.



Photo submitted by Cal Cink

Farmstead (foreground) near Tinahely (*Tigh na hÉille*), south of Dublin in County Wicklow.

CINEMA STUDIES

Cinema Studies is undergoing a “division of labor” and reorganization with the passing of the torch in April from the former Cinema Studies coordinators, Paul Lim and Fred Madaus. We hope you will join us in person in a coming-out party from the Covid isolation. We will start by showing films in the

Domestic and Foreign film categories in the Kansas Memorial Union. — *J. Tom Adams*

DOMESTIC FILMS

Nora Clark nora.clark@washburn.edu

J. Tom Adams papawmik2004@yahoo.com

Tuesday, **May 10**, 1:30 p.m.

Kansas Memorial Union, Pine Room, Level 6

All About Eve

Aspiring actress Eve Harrington (Anne Baxter) maneuvers her way into the lives of a Broadway star (Bette Davis), a playwright, and her director. A classic story of ambition and betrayal, this movie has become part of American folklore. Davis claimed to have based her character on the persona of Tallulah Bankhead. (1950. 2 hours 18 minutes)



FOREIGN FILMS

Nora Clark nora.clark@washburn.edu

J. Tom Adams papawmik2004@yahoo.com

Friday, **May 13**, 1:30 p.m.

Kansas Memorial Union, Pine Room, Level 6

Cuckoo

This comedy-drama is set in September 1944, just before Finland pulled out of World War II. It features three main characters and an unusual twist as the paths of a runaway Finnish sniper and a condemned Soviet captain converge on the farm of a widowed Sami woman. (2002, in Russian with English subtitles. 1 hour 40 minutes)



COMPUTER & TECHNOLOGY STUDIES (Zoom)

Dave Mannering dmannering@yahoo.com

Monday, **May 9**, 10 a.m.

To be announced by email.

Monday, **May 23**, 10 a.m.

The Linux OS: What It Is & Where It's Used

DRAMA STUDY (Zoom)

Michael Shaw michaelhearneshaw@gmail.com

Tuesday, **May 3, 1:30 p.m.**

Tuesday, **May 17, 1:30 p.m.**

Hamlet, by William Shakespeare

We will read and discuss Shakespeare's *Hamlet*.

Considered by many the most celebrated work in English literature, it is also perhaps the most profoundly mysterious. Ignoring the protagonist's injunction to his two friends, we shall seek to pluck the heart out of his mystery. Our leader will be Preston Fambrough.

GAMES THEORY (Zoom)

Dave Mannering dmannering@yahoo.com

NOTE: This is the last month for Scribbler games.

Monday, **May 2, 10 a.m.**

Scribbler games

Monday, **May 16, 10 a.m.**

Scribbler games

GARDEN SEMINAR (Hybrid)

Cal & Jo Cink cinkbird75@gmail.com

Kansas Memorial Union, room to be announced

NOTE: new meeting time and hybrid meetings.

Cal will send weekly email announcements of the room reserved in the Kansas Memorial Union. Let him know if you wish to receive email announcements.

Wednesday, **May 4, 9 a.m.**

Wednesday, **May 11, 9 a.m.**

Wednesday, **May 18, 9 a.m.**

Wednesday, **May 25, 9 a.m.**

GREAT BOOKS DISCUSSION

(Zoom)

Jim Woelfel james.woelfel@yahoo.com

Wednesday, **May 11, 1:30 p.m.**

The Third Man, by Graham Greene

Graham Greene wrote his novella *The Third Man* as a story that would be the fleshed out for the screenplay he wrote for the 1949 movie classic directed by Carol Reed. The novella was published the following year. The story is set in Vienna in the years immediately following World War II. Much of Vienna was in ruins, and, like Berlin, it was divided into four zones of Allied occupation — British, French, Soviet, and American. The extensive, shady black-market activity is at the heart of the plot

LUNCH BUNCH

Ron Schorr rwwschorr@gmail.com

NOTE: If the weather is good, members and guests will meet at the Rotary Arboretum at noon. If the weather is not good and Covid case numbers are stable, Ron will announce a restaurant location to dine indoors. If Covid case numbers surge, lunch meetings will be on Zoom. Let Ron know if you wish to receive his email announcements.

Thursday, **May 5, noon**

Thursday, **May 12, noon**

Thursday, **May 19, noon**

Thursday, **May 26, noon**

MOVEMENT WORKSHOP Tai Chi

Haskell Springer springer@ku.edu

Friday, **May 6, 9 a.m.**

Friday, **May 13, 9 a.m.**

Friday, **May 20, 9 a.m.**

Friday, **May 27, 9 a.m.**

Weather permitting, we will meet in South Park, east of the gazebo. Beginners welcome. Please let Haskell know if you wish to receive weekly notifications of any schedule changes.

OLD TIME RADIO (Zoom)

John Nicholson wryterjccc@gmail.com

Monday, **May 23, 1:30-3:30 p.m.**

Detective Couples

PLEASE NOTE: This month we will meet on the FOURTH Monday, rather than the last Monday of the month, which is Memorial Day.

The theme will be Detective Couples. We'll begin with *The Adventures of the Abbotts*, then we'll listen to *Mr. and Mrs. North*, and finish the meeting with *The Thin Man* (Nick & Nora Charles). No reservations are needed, and newcomers are welcome.

PUBLIC AFFAIRS FORUM (Zoom)

Allan and Louise Hanson

Thursday, **May 19, 1:30 p.m.**

Who Decides?: The Teaching of History, Race, and Sexuality in the Public Schools

Recent polls indicate Americans are deeply divided over how much children in K-12 schools should be taught about racism and sexuality. Debate is sharp on who decides curriculum content: school administrations, teachers, school boards, or parents. Recently, state laws have been enacted to

(Continued from Page 4)

curtail teaching about racism and sexuality. Our speaker is Nicholas Mitchell, assistant professor of curriculum and teaching in the KU School of Education and Human Sciences. His research focuses on diversity and education and how cultural and historical narratives are woven into public school curriculum.

SINGING FOR FUN

Jim Woelfel james.woelfel@yahoo.com

If weather and location can be coordinated, Jim will announce a songfest for May by email. Let him know if you want to be on his contact list.

IN MEMORIAM

Memorial services for Dana A. Leibengood, 89, Lawrence, were held April 9 at Warren-McElwain Mortuary in Lawrence. He died April 5 at KU Medical Center in Kansas City, Kan. He retired in 1989 after 29 years of service as director of Student Services and associate dean of the William Allen White School of Journalism and Mass Communications.

Endacott members volunteered with 2022 AARP tax service

By April 18 this year, most of us had filed our taxes or made arrangements to do so. Some of us got help through the local AARP Foundation Tax Aide service.

Thirteen volunteers with the 2022 service are KU retirees or Endacott members (bold type): **Janice Andes, Nora Clark, Marjorie Cole, Dick and Sue Himes, Chuck Johnson, Audrey Kamb-Studdard, Sherrill Martinez, Marlene Mawson, Max Mayse, Christine Winters, Paul Willhite, and Maxine Younes.**

They were among 72 volunteers for AARP's Kansas District 24, which includes Douglas, Franklin, and Jefferson counties, with sites in Lawrence, Baldwin City, Ottawa, and Oskaloosa. The service focuses on taxpayers who are over 50 or have low to moderate income.

Laurie Doud, Carolyn Madaus volunteer to chair Scrapbook and Care Correspondent activities

Two members have volunteered to take over the activities that Janis Hutchison has been chairing: Bulletin Board and Scrapbook and Care Correspondent.

Laurie Doud will manage the Bulletin Board and Scrapbook preservation; and Carolyn Madaus will be the Care Correspondent.

Janis has volunteered as the Care Correspondent for more than 10 years. She added the Bulletin Board and Scrapbook duties a few years ago, when Pat Kelly asked to step down.

The scrapbooks contain Bulletin Board items, photographs, and newspaper clippings about Endacott members and activities as well as correspondence from members and their families following a special occasion or a death. Endacott Society members are considering donating older scrapbooks to KU Archives.

The Care Correspondent sends birthday and get well greetings as well as congratulatory notes to members who have received a recent honor or accomplishment (such as publishing a book), and condolence notes to members and their families.

Sarah Merriman, AARP Tax Aide coordinator for the local district, said the volunteers prepared 1,335 tax returns in 2022. "If you add in the spouses for those filing joint returns we helped a total of 1,670 people," she said.

Merriman said she was grateful for all those volunteering. Many return every year. She noted that this season Sue Himes finished her 28th year volunteering and Audrey Kamb-Studdard her 21st year. The service has been available in Lawrence about 35 years.

Covid changed the local operation. In 2021, returns were prepared with little direct contact between taxpayers and volunteers. By 2022, taxpayers could bring their documents into the building with limited access to the volunteers.

Merriman said volunteers are always needed and she will be recruiting this fall. All volunteers train to pass IRS certification.

ASSORTED May events in the neighborhood

H.M.S. Pinafore

April 29, May 3 and 5, 7:30 p.m. May 1, 2:30 p.m.

Crafton-Preyer Theatre, Murphy Hall

A co-production of KU School of Music and University Theatre. This masterpiece of musical theatre by Gilbert & Sullivan features the KU Symphony Orchestra. Purchase tickets online at kutheatre.com or by calling 785-864-3982.

A Conversation With Alice Walker

Thursday, **May 5**, 7:30 p.m.

Online via Crowdcast, please register at <https://www.crowdcast.io/e/Walker>

Presented in partnership with The Project on the History of Black Writing. Pulitzer Prize-winning author Alice Walker discusses her new book, *Gathering Blossoms Under Fire*, a compilation of 50 years of journals edited by the late critic and writer Valerie Boyd.

Historic Mount Oread Walking Tour

Saturday, **May 7**, 9:30 a.m.-noon

The Historic Mount Oread Friends group invites Endacott members to join a walking tour along Jayhawk Boulevard on May 7. Joe Fearn, KU's new landscape manager, will share his vision for

improving and sustaining KU's beautiful campus and talk about improvements that are already in the works. The tour begins and ends in front of Dyche Hall.

Kite Festival

Saturday, **May 7**, 1-4 p.m.

Spencer Museum of Art

This event commemorates the Hamamatsu Kite Festival that occurs each May in Japan. People of all ages are invited to learn about the history and culture of kite-making, create their own kites, and let them take flight outside the museum.

Sponsored by Spencer Museum of Art, Center for East Asian Studies, and the School of Engineering.

KU Commencement

Sunday, **May 15**, 10:30 a.m.-12:30 p.m.

David Booth Kansas Memorial Stadium

Prime Time lunar eclipse

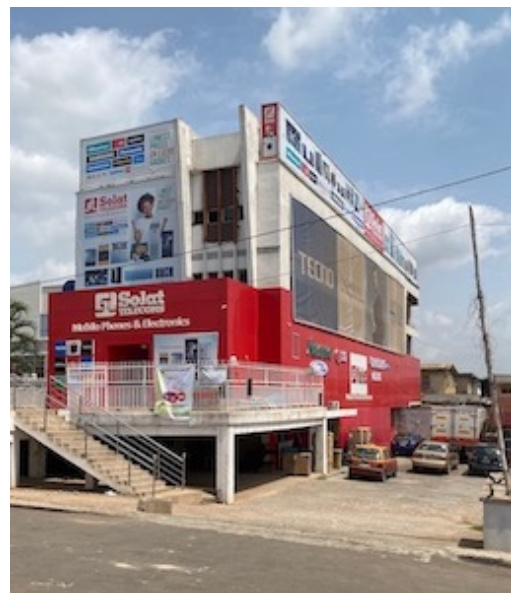
Sunday, **May 15**, 8-11 p.m.

The night of May 15 into early May 16, Lawrence and most Kansas residents should be able to view a total lunar eclipse. The timeanddate.com website describes the eclipse as a "prime time" event in that it will be visible from about 8 to 11 p.m. KU Astronomy Associates of Lawrence's website has a link to a "Clear Sky Chart for Lawrence." <https://www.cleardarksky.com/c/LawrenceKSkey.html>



Postcards from Nigeria #2 & #3

Contrasting natural and commercial scenes. (Left) A towering mango tree at a family member's home. (Below) An example of advertising as they drove from the Lagos airport to Ibadan.



Photos submitted by Omofolabo Ajayi-Soyinka

Osher Institute offers open houses, discounts

To help boost enrollment and reverse the impact of the pandemic, KU's Osher Lifelong Learning Institute plans three open house sessions in May. People age 50 and older may meet instructors and register for summer courses and events. Class formats vary from in-person or online only to a hybrid of both, and some are pre-recorded.

In addition, Osher has an "It Pays to Have Friends" offer. Current Osher students may take a course (not a special event) for half-price when they refer a friend or family member who enrolls in one course at an introductory price of \$15. The friend or family member must be new to Osher or not have enrolled since June 1, 2019.

To refer a friend or family member, send an email to KU's Osher director, Linda Kehres at linda.k@ku.edu.

Kehres notes that although Osher focuses on those age 50 and older, learners of all ages are welcome. Endacott members can receive a once-a-semester \$10 discount for any course (but not for special events).

Open houses are free, but registration is required to attend. Visit <https://lpe.ku.edu/osher-home> or call 913-897-8530 to register.

The open house dates are:

- **Online**, Wednesday, **May 11**, 6:30-8:30 p.m.
- **Lawrence**, Wednesday, **May 4**, 2-3:30 p.m., 1515 St. Andrews Drive (in person)
- **Overland Park**, Tuesday, **May 17**, 2-3:30 p.m.; KU Edwards Campus, Regnier Hall, 12610 Quivira Road (in person)

The open houses and discount offers are intended to rebuild Osher enrollments, which dropped dramatically with pandemic restrictions and precautions.

The 2022 summer session runs June 6-Aug. 11 with 46 courses and events, including 33 in-person classes at sites in Lawrence, Eudora, Overland Park, Prairie Village, Topeka, and Clay County, Mo. Some pre-recorded Osher courses also are available at a reduced cost for a limited time (marked with an * in the following list).

The summer instructors include Endacott members (bold type) and KU retirees: **Thomas Fox Averill**, *Botanical Gardens Around the World*; ***Kevin Boatright**, *The Story of Photojournalism*; **Diana Carlin**, *Women: The Forgotten 'Men' in*

History; ***John Doveton**, *Deep Time: Stories From the Rocks*; William Keel, *German Settlements and Culture in Kansas*; Charles 'Chick' Keller, *Climate Change, Income Inequality and Globalization and Climate Change: More Fires, Floods, Droughts, and Hurricanes*; ***Bernie Kish**, *Rockne, Haskell and Mizzou: Kansas Sport History Reflections*; **Dave Mannerling**, *Valley of the Kings, Queens, and Monkeys*; **Jim Peters**, *John Brown: Ardent Abolitionist or Domestic Terrorist?* and *Presidential Assassins*; ***Paul Schumaker**, *Moral, Social, and Political Pluralism in American Culture*; Paul Williamson, M.D., *The Wisdom of Solomon Beyond Proverbs*.

To view the summer catalog online go to: <https://lpe.ku.edu/osher-home> and scroll down to find the catalog prompt.

AMPLIFICATION DEPARTMENT:

Campus parking permits

The parking refresher in the April newsletter sparked some discussion at the April 20 coffee hour. A quick check with Margretta de Vries, transit program coordinator for KU Transportation Services revealed:

- The Information Booth attendants at the Jayhawk Boulevard and Mississippi Street entrances can sell a one-day permit only for "today" when you buy them there. The attendants are not equipped to sell 15- or 30-day use passes. Retirees with an active KU email account may purchase annual, monthly, or daily permits through the Parking Portal online at <https://ku.nupark.com/portal/>. Permits may also be purchased over the phone (785-864-PARK)
- The use of permits is recorded by roving cameras, not the cameras at the booths. Eventually Transportation Services plans to have fixed cameras in the parking garages and lots to record use of the permits. At present, if the License Plate Reader vehicles do not come through a lot or garage while a person is parked there, that use of the permit is not recorded.
- Permit owners should receive an email notifying them each time the permit is used. You can also email kupark@ku.edu to verify the number of uses remaining on a parking permit.

Postcards from Nigeria # 4 & 5



Photos submitted by Omofolabo Ajayi-Soyinka

April in the Northern Tropic

Two sunny and slightly hazy views of a gazebo in the garden of a family member Omofolabo Ajayi-Soyinka is visiting.

JUNE Newsletter

Send news items for the **June newsletter** by or before **Friday, May 20**, to mjdunlap@ku.edu

Endacott Society online
endacottsociety.org

Members may subscribe to the Endacott e-mail list by sending a request to endacottsociety@gmail.com

DUES & GIFTS

To be a member of the Endacott Society, one must have retired from KU or any accredited institution of higher learning. Sign up and remit dues as a member of the KU Alumni Association, designating a desire for Endacott Society membership. (Call 785-864-4760, asking for Records, or go online at www.kualumni.org/join; scroll down to Membership Options for Every Jayhawk, click on Endacott Society, and select an option.) Dues for retirees are \$30 a year. Spouses or partners can be added at no additional cost.

Contributions or memorial gifts in honor of current or deceased persons should be paid directly to the Endacott Society in care of the Adams Alumni Center, 1266 Oread Ave., Lawrence KS 66045-3169. These funds will be deposited in the **Expressions of Appreciation Fund** and can, if so designated, be used to support the Endacott Society's various activities.